

C2S

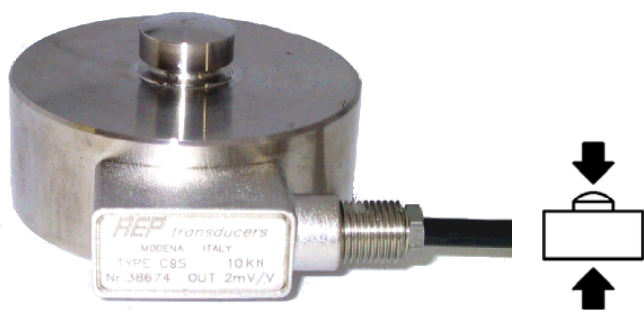
KOMPRESJONCOMPRESSION

Tilbehør **Accessories** A



- ① Lastutjevningshode / Loading head
- ② Monteringsplate / Mounting plate

Lavprofil veicelle Høy langtidstabilitet Hermetisk tett, LASER-sveiset For dynamiske applikasjoner	Low profile load cell High long term stability Completely LASER welded For dynamic applications
---	--



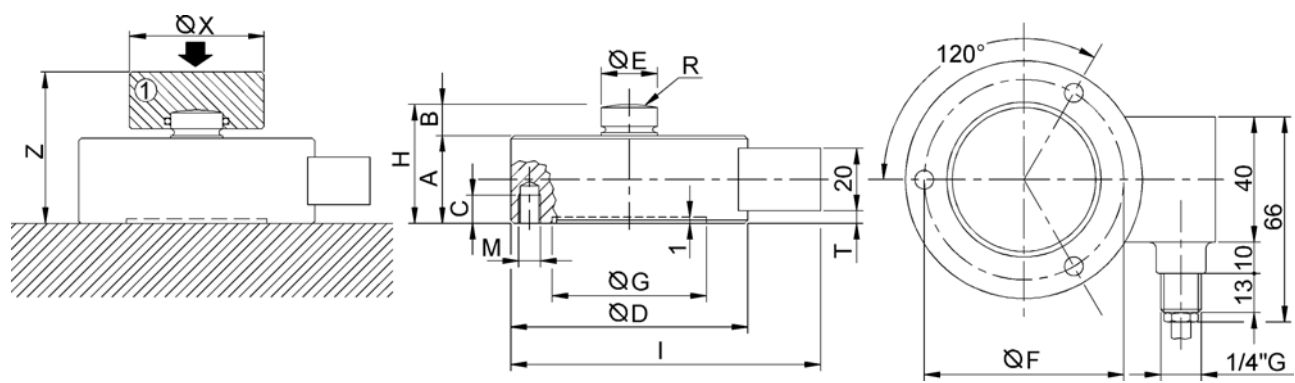
OIML R60 Anbefalt referanse norm
 Reference recommendation

Monteringsbrakett / Weighing unit ③



Dimensjoner *Dimensions* (mm)

KODE/CODE (Class C2)	KODE/CODE (Class C3)	LOAD	A	B	C	ØD	ØE	ØF	ØG	H	I	M	n°M	R	T
CC2S82100KC25	CC2S82100KC35	100 kg	32	12	11	82	22	68	52,3	44	102	M8	3	50	6
CC2S82250KC25	CC2S82250KC35	250 kg													
CC2S82500KC25	CC2S82500KC35	500 kg													
CC2S821TC25	CC2S821TC35	1 t													
CC2S822T5C25	CC2S822T5C35	2.5 t													
CC2S825TC25	CC2S825TC35	5 t													
CC2S827T5C25	CC2S827T5C35	7.5 t	50	14	12	126	35	90	77,3	64	148	M8	3	160	15
CC2S8210TC25	CC2S8210TC35	10 t													
CC2S12620TC25	CC2S12620TC35	20 t													
CC2S12630TC25	CC2S12630TC35	30 t													
CC2S16550TC25	CC2S16550TC35	50 t													
CC2S16575TC25	CC2S16575TC35	75 t													
CC2S165100TC25	CC2S165100TC35	100 t	60	20	20	165	60	130	92,3	80	188	M16	4	300	17



C2S:	CODE	ACCESSORIES (optional):	TILBEHØR (option):	Z	ØX
100, 250, 500 kg 1, 2.5, 5, 7.5, 10 t	CTIC22	① Loading head.	Lastutjevningshode.	59	57
	CPB120D82	② Mounting plate.	Monteringsplate	/	/
	CUPC2S	③ Weighing unit.	Monteringsbrakett.	/	/
20, 30 t	CTIC35	① Loading head.	Lastutjevningshode.	82	76
50, 75, 100 t	CTIC60	① Loading head.	Lastutjevningshode.	106	126

Tekniske data
Technical data

Nøyaktighetsklasse: Iflg. OIML R60	ACCURACY CLASS: According to OIML R60	C2	C3
LEGALE DELINGER	LEGAL DIVISIONS	2000	3000
NOMINELL LAST (E_{max})	NOMINAL LOAD (E_{max})	100-250-500 kg 1-2.5-5-7.5-10-20-30-50-75-100 t	
MINIMUM ANTALL DELINGER (V_{min})	MINIMUM VERIFICATION INTERVAL (V_{min})	$E_{max} / 10000$	
KOMBINERT FEIL REPETERBARHET NULL-DRIFT over 30 min. DRIFTING ved nominell last: a) over 30 min. b) mellom 20 og 30 min.	COMBINED ERROR NON REPEATABILITY ZERO RETURN over 30 min. CREEP at nominal load: a) over 30 min. b) over 20 and 30 min.	$\leq \pm 0.023\%$ $\leq \pm 0.010\%$ $\leq \pm 0.026\%$	$\leq \pm 0.018\%$ $\leq \pm 0.008\%$ $\leq \pm 0.016\%$
TEMPERATUR EFFEKT (10 °C) a) for nullpunkt b) for følsomhet	TEMPERATURE EFFECT (10 °C) a) on zero b) on sensitivity	$\leq \pm 0.024\%$ $\leq \pm 0.017\%$	$\leq \pm 0.020\%$ $\leq \pm 0.010\%$
NOMINELL FØLSOMHET FØLSOMHETS TOLERANSE	NOMINAL SENSITIVITY SENSITIVITY TOLERANCE	2mV/V $\leq \pm 0.1\%$ F.S.	
INNGANGSMOTSTAND UTGANGSMOTSTAND ISOLASJONSMOTSTAND NULLBALANSE ANBEFALT SUPPLYS PENNING NOMINELL SUPPLYS PGS.OMRÅDE MAKS. SUPPLYS PENNING	INPUT RESISTANCE OUTPUT RESISTANCE INSULATION RESISTANCE ZERO BALANCE RECOMMENDED SUPPLY VOLTAGE NOMINAL SUPPLY VOLTAGE RANGE MAXIMUM SUPPLY VOLTAGE	700 \pm 2 Ω 705 \pm 2 Ω > 5 G Ω $\leq \pm 1\%$ F.S. 10 V 1-15 V 18 V	
MEKANISKE GRENSER REFERERT TIL NOMINELL LAST: a) minimum last b) bruksområde c) maks. tillatt last d) bruddlast e) maks. horisontal last f) maks. tillatt dynamisk last	MECHANICAL LIMIT values referred to nominal load: a) minimum load b) service load c) max permissible load d) breaking load e) max transverse load f) max permissible dynamic load	0% 120% 150% >300% 50% 50%	
SAMMENTRYKKING VED NOMINELL LAST	DISPLACEMENT AT NOMINAL LOAD	0.16 mm	0.23 mm
REFERANSETEMPERATUR NOMINELL TEMPERATUROMRÅDE BRUKSTEMPERATUR LAGRINGSTEMPERATUR	REFERENCE TEMPERATURE TEMPERATURE NOMINAL RANGE SERVICE TEMPERATURE RANGE STORAGE TEMPERATURE RANGE	+23°C -10/+40 °C -20/+70 °C -20/+80 °C	
VEKT	WEIGHT	3.42 kg	9.43 kg
TETTINGSGRAD (EN 60529) MATERIALE KABELLENGDE	PROTECTION CLASS (EN 60529) EXECUTION MATERIAL CABLE LENGTH	IP68 (100h at 1m watercolumn) Rustfritt stål/ Stainless Steel 5m	
FESTESKRUER: a) diameter b) kvalitet c) maks. moment	FIXING SCREWS a) diameter b) resistance class c) tightening torque	M8 12.9 80 Nm	M16 12.9 230 Nm

Elektrisk tilkoping
Electrical connections

PVC 105°C skjermet kabel, \varnothing 5,2 mm med 4 stk. fortinnede, \varnothing 0,35 mm² ledere.

PVC 105°C shielded cable, \varnothing 6mm with 4 tinned \varnothing 0.35mm² conductors.

Veiecelle	Load Cell	TILKOPLING	WIRING	CABLE	KABEL
		MATESPENNING+	EXCITATION+	Red	Rød
		MATESPENNING-	EXCITATION -	Black	Svart
		UTSIGNAL+	OUTPUT+	White	Hvit
		UTSIGNAL-	OUTPUT-	Yellow	Gul
		-----	-----	Shield*	Skjerm*

* Koplet til til veiecellekroppen. / Connected to the body of the load cell.