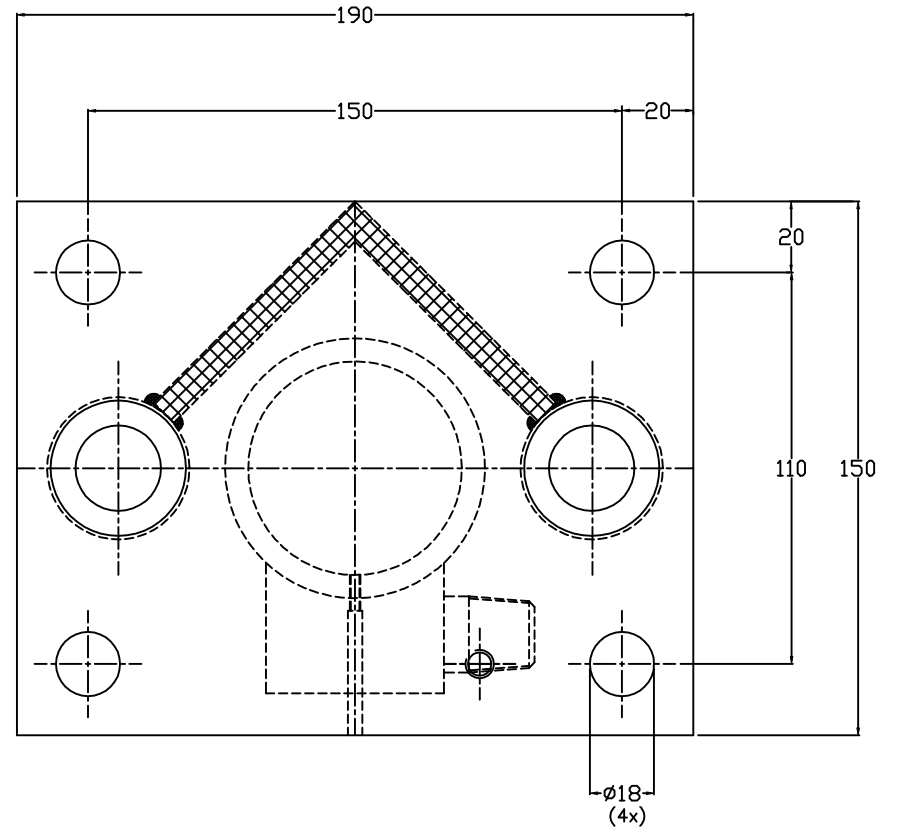
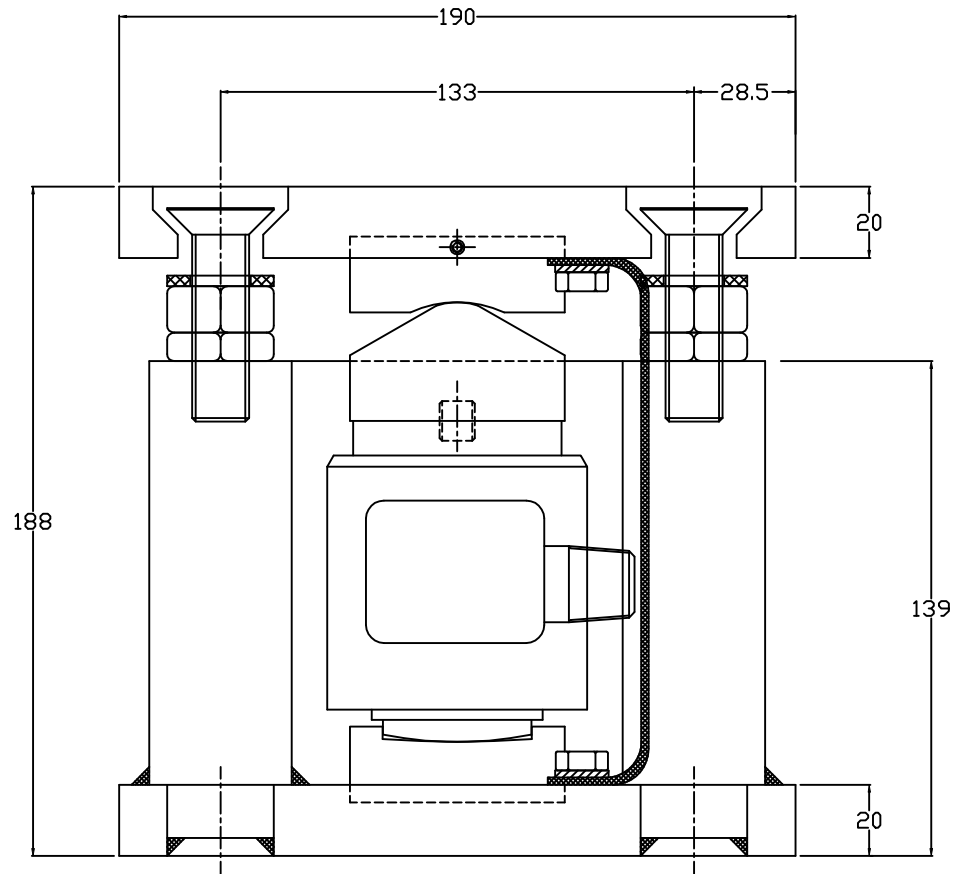
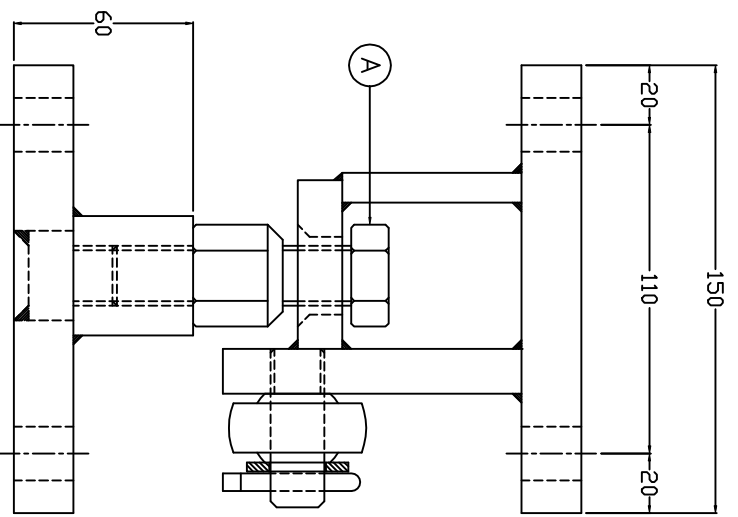
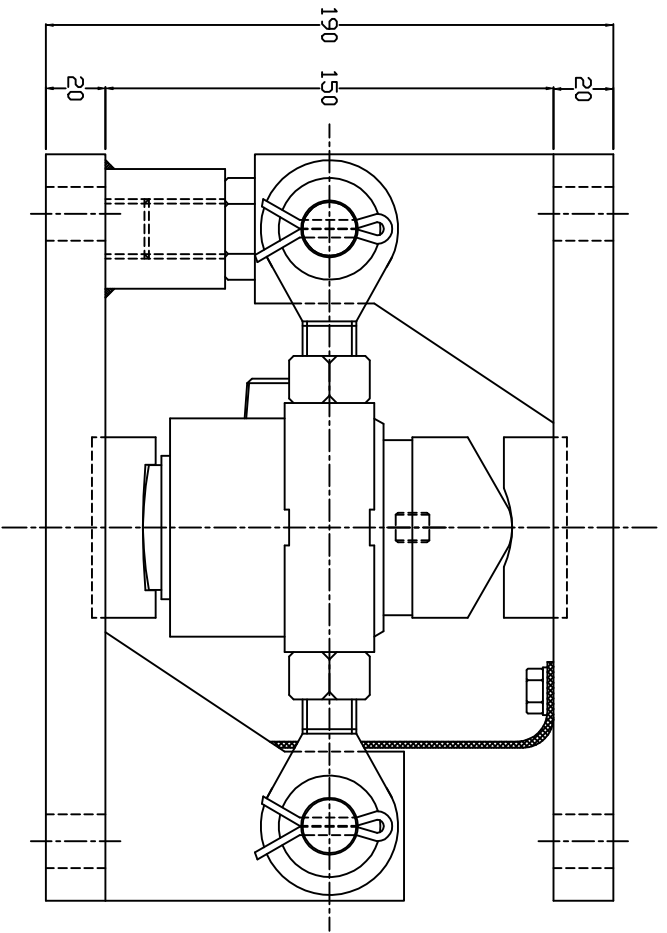
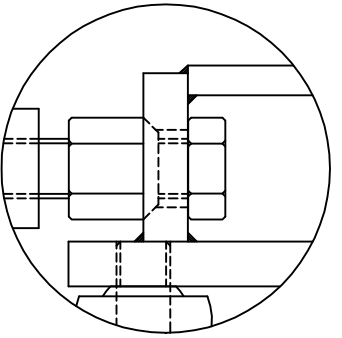
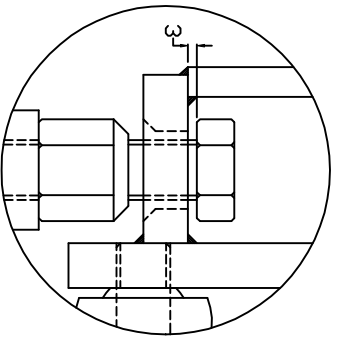
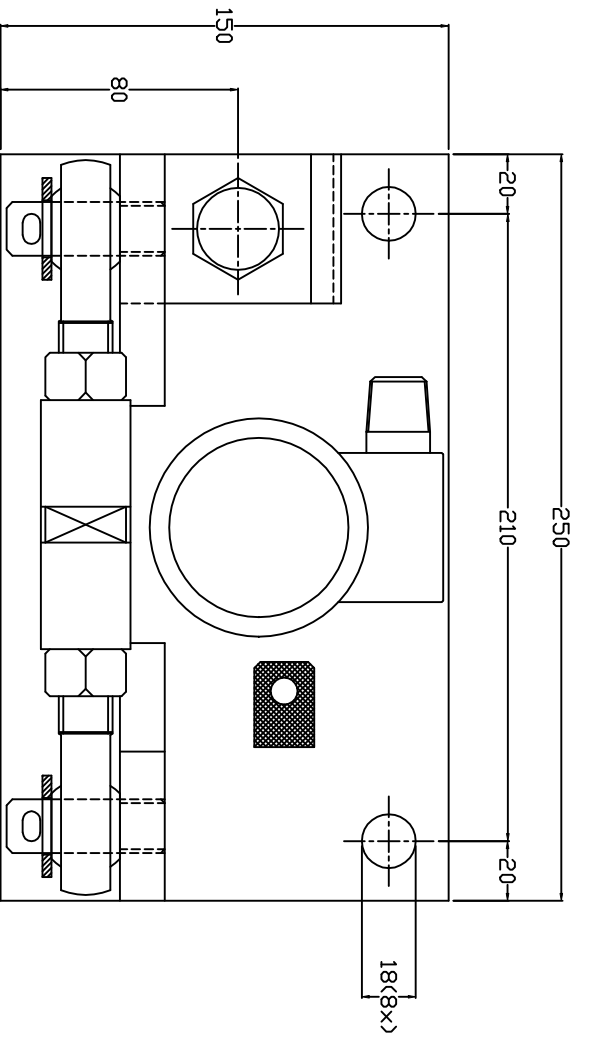


Assembly mounting

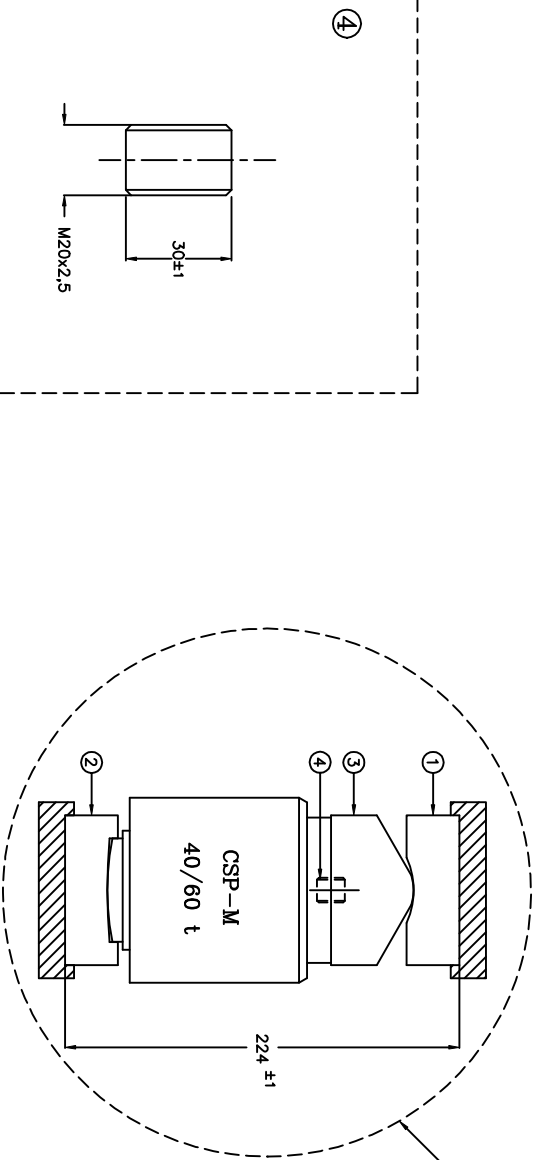
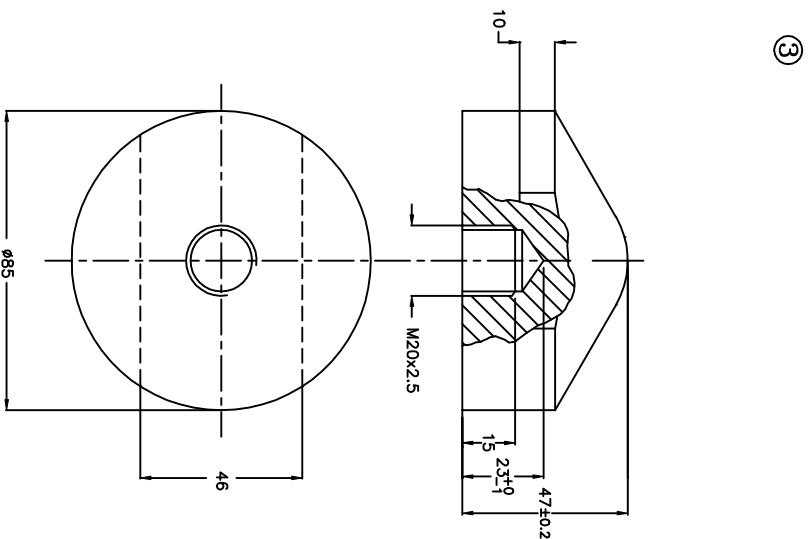
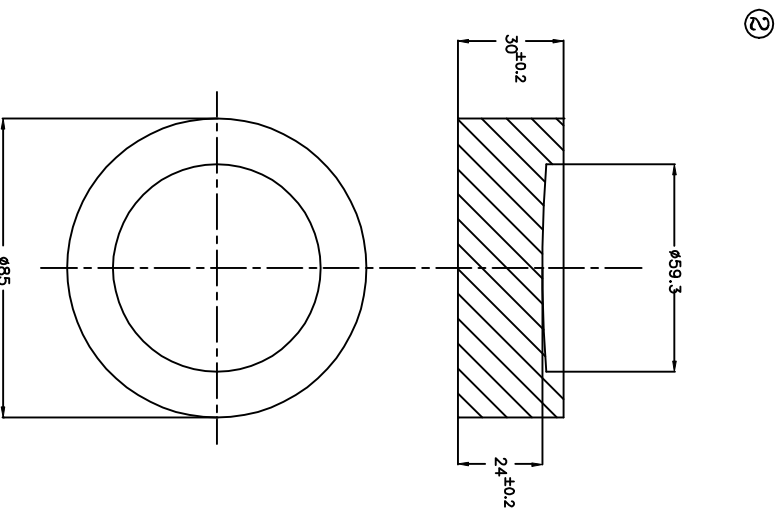
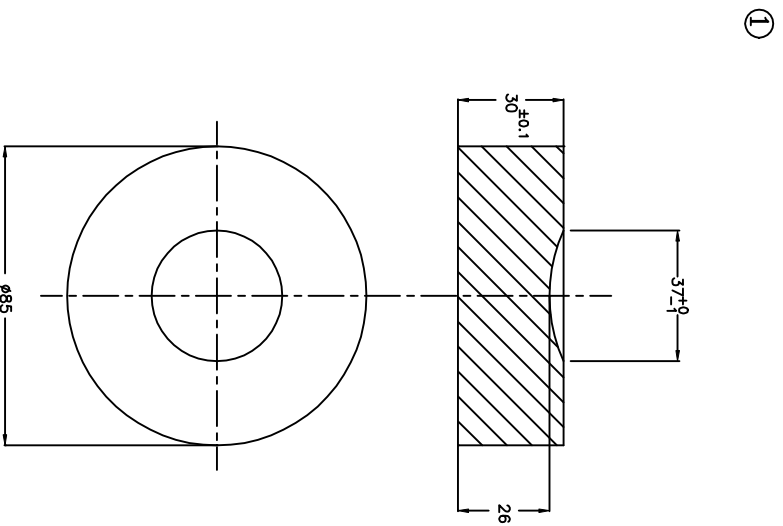
REVERE TRANSDUCERS EUROPE		THIS DRAWING SHALL NOT BE REPRODUCED WITHOUT THE PERMISSION OF REVERE TRANSDUCERS EUROPE	
GEN. TOL. ±0.2	ANGLE ±	MATERIAL: w.stnr. 1.2083	PROU.
SCALE : 1:1	ROUIGN. 3/2	FINISH:	DATE : 11-03-'94
DRAWN : U.Dreischorf		DRAWING : Mounting Set	
PARTNUMBER 899953-11		CSP-M 5, 10 & 25 ton	
SHEET: OF		SIZE A2	



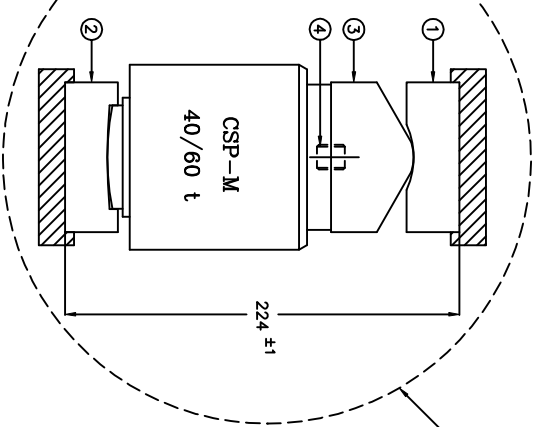
499050-10	Stainless Steel	THE DRAWING SHALL NOT BE REPRODUCED WITHOUT PERMISSION OF REVERE TRANSDUCERS EUROPE
499050-00	Steel Nickel Plated	
PARTNUMBER	SPECIFICATION	
REVERE TRANSDUCERS EUROPE		
GEN.TOL ± 1	ANGLE ±	MATERIAL:
SCALE : None	ROUGHN. ✓	PROJ.
DRAWN : U.Dreischarf	FINISH:	DATE : 12-08-'96
DRAWING : Self Aligning Silomount	499050	— SIZE
CSP-M 10/25ton	SHEET: 1 OF 1	Rev A2



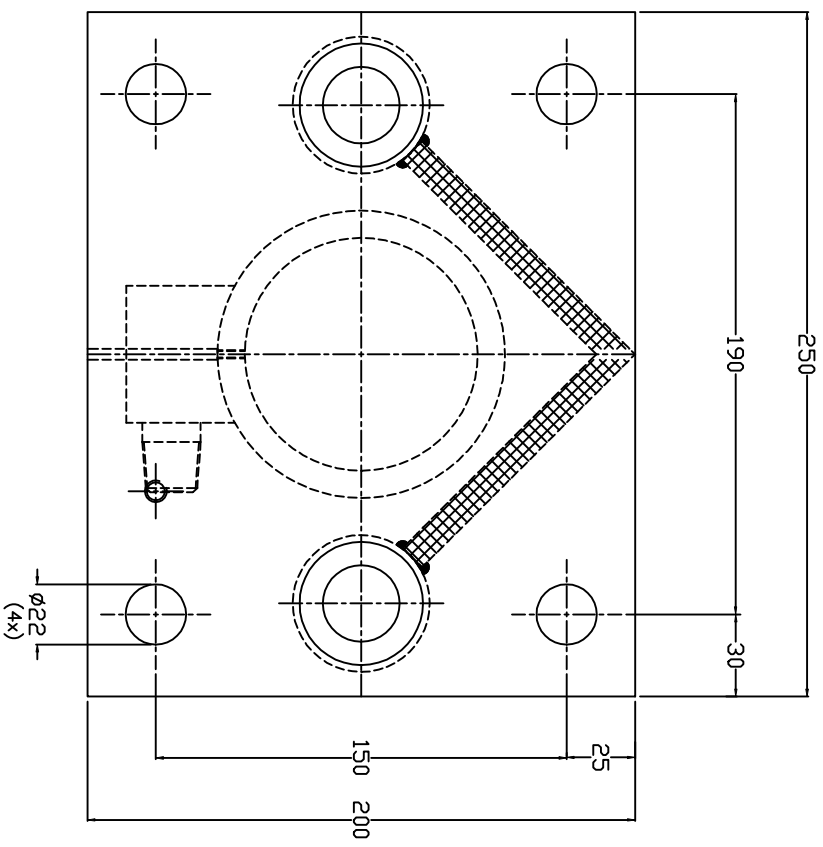
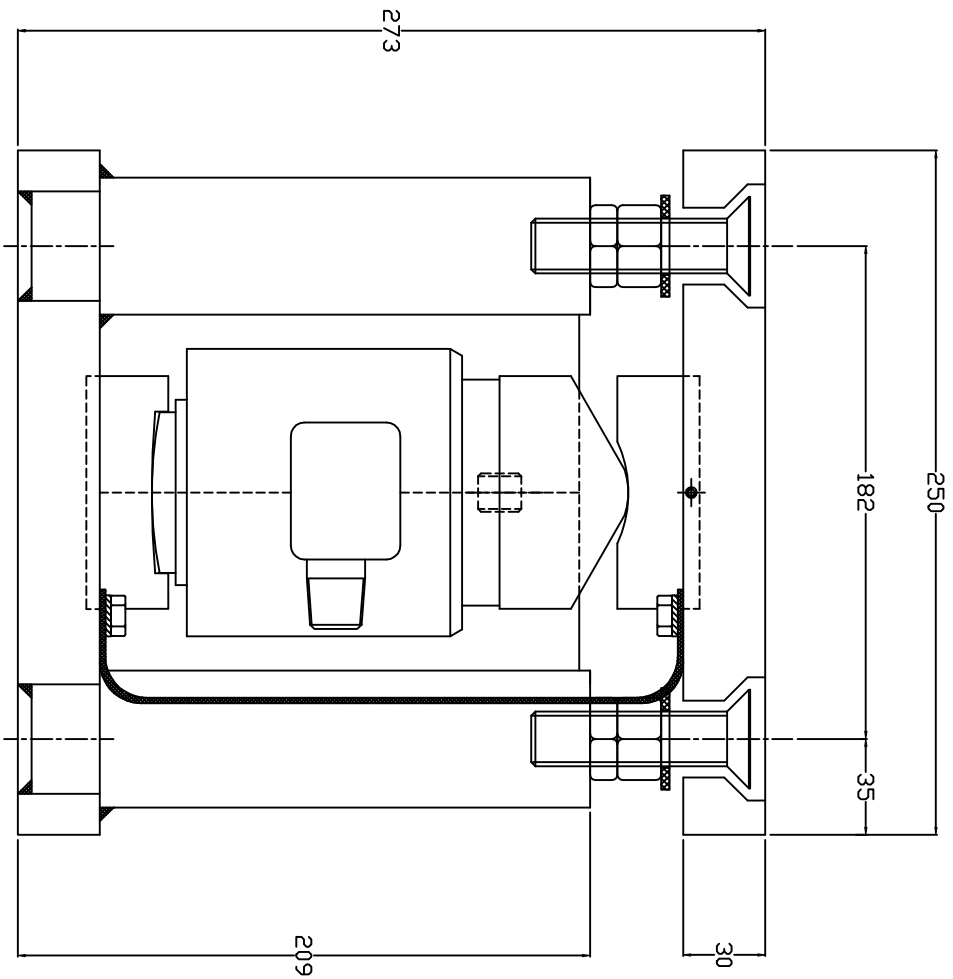
499059-10	Stainless Steel
499059-00	Steel (Nickel Plated)
FACTORY	SPECIFICATION
REVERE TRANSDUCERS EUROPE	
SCALE: 3:1	ANGLE: 30°
DRAWN: J.H.A. Kersten	FINISH: ✓
DRAWING: Stabilised Tank Mount	
CSP - 10/25ton	
499059	REVERE TRANSDUCERS EUROPE
SHEET: 1 OF 1	PROJ. 499059
REV: A2	DATE: 15-09-97
	SIZE: A2



Assembly mounting

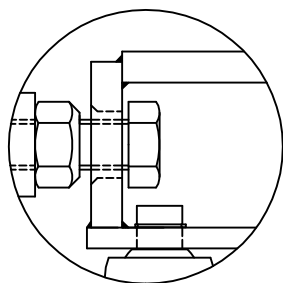
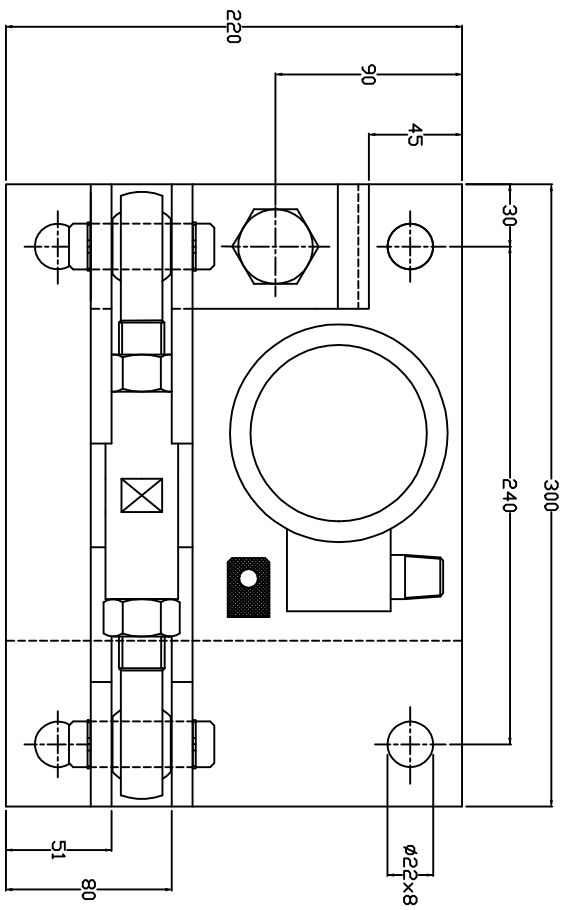


899953-12		PARTNUMBER	
REVERE TRANSDUCERS EUROPE			
GEN.TOL. ±0.2	ANGLE ±	THIS DRAWING SHALL NOT BE REPRODUCED WITHOUT THE WRITTEN PERMISSION OF REVERE TRANSDUCERS EUROPE	
SCALE : 1:1	ROUHN. 3/2	MATERIAL: wsthr. 1.2083	PROU.
DRAWN : U.Dreischorf		FINISH:	DATE : 10-03-'94
DRAWING : Mounting Set		899953-12 C	SIZE
CSP-M 40 and 60 ton.		SHEET: OF	A2

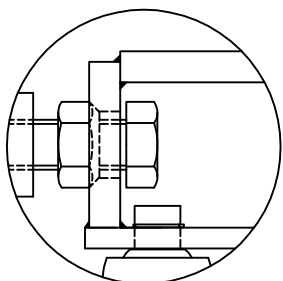


499051-10	Stainless steel
499051-00	Steel Nickel Plated
PARTNUMBER	SPECIFICATION
REVERE TRANSDUCERS EUROPE	
QTY: 1	ANGLE: 30°
SCALE: None	FINISH: None
DRAWN: U. Drehscher	DATE: 14-08-98
DRAWING: CSP-M 40/60ton	
Self Aligning Siltomount	
499051	SHEET: 1 of 1
REV: 1	SIZE: A2

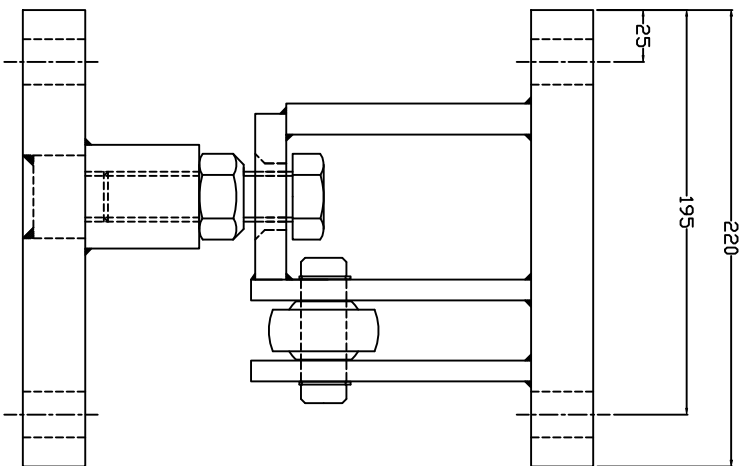
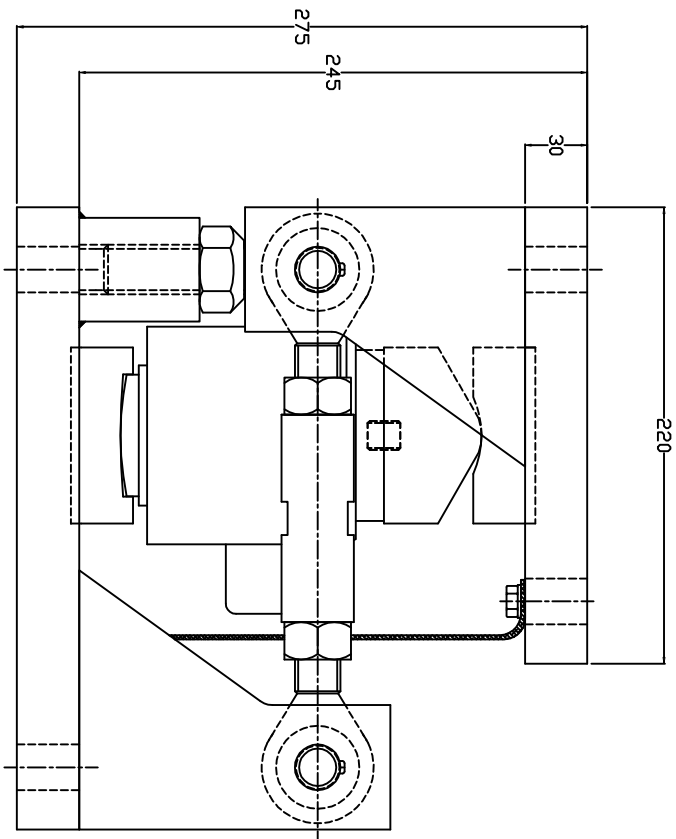
DATE	LET	REVISION	BY	CHK	APPROVALS
30-08-'97	-	New Drawing	A.H. J.K.		



Operation

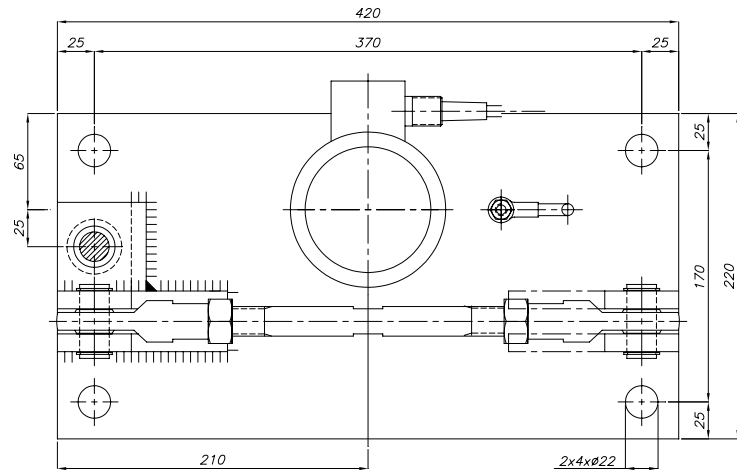


Installation

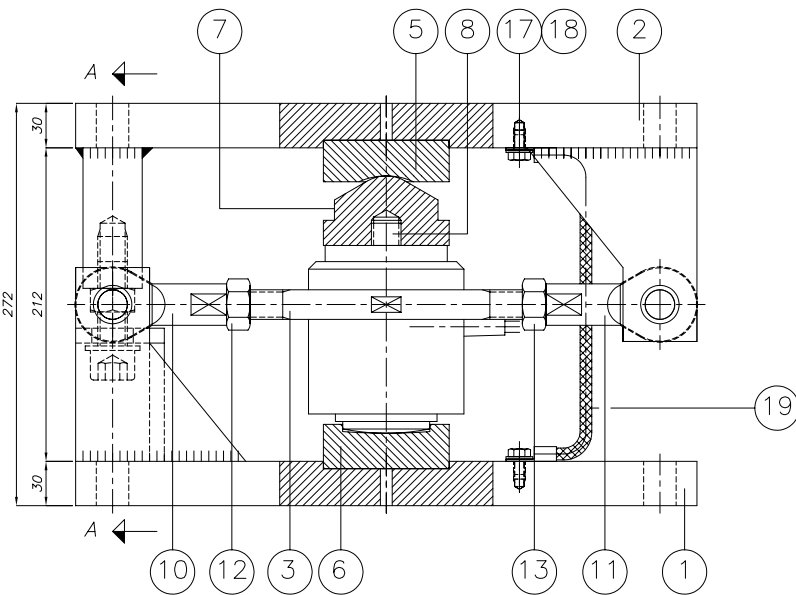


489060-20	Stainless Steel
489060-00	Steel Nickel Plated
PARTNUMBER	SPECIFICATION
REVERE TRANSDUCERS EUROPE	
SCALE: 3	ANGLE: 3
DRAWN: J. Nove	PROJ: 08-10-97
DRAWING: Angelo Hupfiesl	FINISH: -
CSP - M 40/80ton	SIZE A2
SHEET: 1 OF 1	

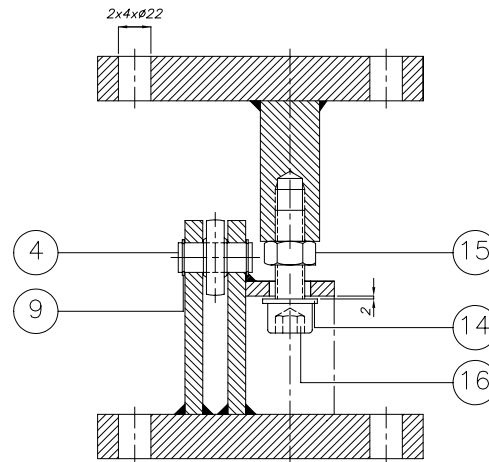
Date	Let	Revision	By	Chk	Approvals
28-02-'02	-	New Drawing	F.G	.	



799913-10		Stainless steel	
PARTNUMBER	ITEM	QTY	DESCRIPTION
	19	1	Earth cable
	18	2	Hexagon screw SS-A2
	17	2	Washer SS-A2
	16	1	Socket head cap screw SS-A2
	15	1	Hexagon nut SS-A2
	14	1	Washer SS-A2
	13	1	Hexagon nut SS-A2
	12	1	Hexagon nut left hand thread SS-A2
	11	1	Ball joint SS
	10	1	Ball joint SS left hand thread
	9	2	Locking ring SS-A2
499033-01	8	1	Threaded rod M20x2,5x35mm
499016-00	7	1	Mounting hardware
499015-00	6	1	Mounting hardware
499014-00	5	1	Mounting hardware
799913-14	4	2	Pin
799913-13	3	1	Stay rod
799913-12	2	1	Top plate
799913-11	1	1	Base plate
PARTNUMBER	ITEM	QTY	DESCRIPTION
799913-00		STEEL ASSEMBLY	
PARTNUMBER	ITEM	QTY	DESCRIPTION
	19	1	Earth cable
	18	2	Hexagon screw
	17	2	Washer
	16	1	Socket head cap screw
	15	1	Hexagon nut
	14	1	Washer
	13	1	Hexagon nut
	12	1	Hexagon nut left handed thread
	11	1	Ball joint
	10	1	Ball joint left handed thread
	9	2	Locking ring
499033-01	8	1	Threaded rod M20x2,5x35mm
499016-00	7	1	Mounting hardware
499015-00	6	1	Mounting hardware
499014-00	5	1	Mounting hardware
799913-04	4	2	Pin
799913-03	3	1	Stay rod
799913-02	2	1	Top plate
799913-01	1	1	Base plate
PARTNUMBER	ITEM	QTY	DESCRIPTION



Section A-A



799913-00		STEEL ASSEMBLY	
PARTNUMBER	ITEM	QTY	DESCRIPTION
	19	1	Earth cable
	18	2	Hexagon screw
	17	2	Washer
	16	1	Socket head cap screw
	15	1	Hexagon nut
	14	1	Washer
	13	1	Hexagon nut
	12	1	Hexagon nut left handed thread
	11	1	Ball joint
	10	1	Ball joint left handed thread
	9	2	Locking ring
499033-01	8	1	Threaded rod M20x2,5x35mm
499016-00	7	1	Mounting hardware
499015-00	6	1	Mounting hardware
499014-00	5	1	Mounting hardware
799913-04	4	2	Pin
799913-03	3	1	Stay rod
799913-02	2	1	Top plate
799913-01	1	1	Base plate
PARTNUMBER	ITEM	QTY	DESCRIPTION

REVERE TRANSDUCERS EUROPE			THIS DRAWING SHALL NOT BE REPRODUCED WITHOUT PERMISSION OF REVERE TRANSDUCERS EUROPE
GEN.TOL .	ANGLE ±	MATERIAL:	
SCALE 1:2.4	ROUGHN. <input checked="" type="checkbox"/>	PROJ.	
DRAWN : F.Grootenboer	FINISH:	DATE : 28-02-'02	
DRAWING : Silo Mount SM-Cr-U7		799913	-
Loadcell CSP-M-40-60 ton		SHEET: 1 OF 5	Rev A2