

**Underhook/In-Line Strain Gauge Lift Link  
complete with Battery Powered Indicator**

# **LIFT LINK SYSTEM**

**ET Series**

**Wire Linked  
Version**



- **Ranges 1 tonne to 500 tonne**
- **Designed for use with standard Lifting Shackles**
- **Link Sealed to IP66**
- **Display Sealed to IP65**
- **Robust Construction**
- **Low Weight compared to other manufacturers models**
- **Supplied with Rugged Carry Case and 10m connector cable**
- **Dual Range Display**
- **3 YEAR WARRANTY**

**Options Available**

UK Plug-In Charger

Re-chargeable Alkaline Batteries

Bow or D type Shackles

Telemetry Linked Version

## **DESCRIPTION**

The ET series of Lift Link Load Cells has been specifically developed for the measurement of cable tension and under hook crane/lifting gear weighing.

The accuracy achieved by the ET series is unrivalled in its price range and combines high quality with excellent value for money. The weight and overall height of the ET series is much lower than that offered by other manufacturers, therefore reducing the overall headroom required for the installed system.

The ET is environmentally sealed to IP66 to give excellent waterproofing properties for use outside in arduous conditions. During operation the ET link is connected via screen cable to the PD100 battery powered display. The system is supplied calibrated in the required engineering units and is simple to operate using the five front panel keys ON/OFF, TARE, PROG, RESET and CHAN. 1 or 16 channel versions are available so as to enable the instrument to be configured to read separate parameters i.e., LBS/KG, TONNES/KN, if required.

It comes with Applied Measurements standard 3 year warranty.

*Transducer Specialists...*

**APPLIED MEASUREMENTS LIMITED**

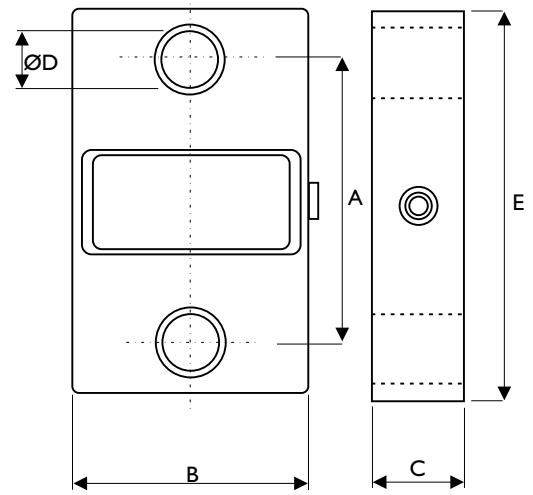
3 MERCURY HOUSE - CALLEVA PARK - ALDERMASTON - BERKSHIRE - RG7 8PN - UK

Tel: (+44) 0118 981 7339 Fax: (+44) 0118 981 9121 email: info@appmeas.co.uk Internet: www.appmeas.co.uk



# SPECIFICATION

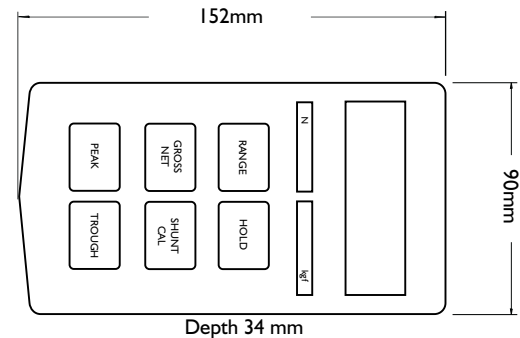
CHARACTERISTICS	ET
<b>Ranges:</b>	1, 2, 5, 12, 25, 35, 50, 100, 250, 500 tonne
<b>Accuracy:</b>	<0.25 % of Rated Output
<b>Operating Temperature Range:</b>	-10 to +80 °C
<b>Safe Overload:</b>	150 % of Rated Capacity
<b>Safe Side Load:</b>	50 % of Rated Capacity
<b>Ultimate Overload:</b>	500 % of Rated Capacity
<b>Construction:</b>	Anodised Aluminium Alloy
<b>Environmental Protection:</b>	IP66
<b>Connections:</b>	6 Pin Bayonet Lock Connector



All dimensions in mm

RANGE	A	B	C	ØD	E	WEIGHT
1, 2, 5 t	108	105	40	Ø30	164	1.4kg
12 t	120	105	40	Ø38	210	1.9kg
25 t	131	124	55	Ø53	255	4kg
35 t	147	138	55	Ø60	305	5kg
50 t	170	150	75	Ø73	345	9kg
100t	228	220	123	Ø100	455	27kg
250t	330	304	189	Ø145	680	87kg
500t	451	500	200	Ø200	1015	225kg

CHARACTERISTICS	TRI50
<b>Display:</b>	7-digit LCD (±9999999) 10.2mm high
<b>Display Resolution:</b>	1:250K @ 1Hz update, 1: 65K @ 10Hz update
<b>Accuracy:</b>	<0.005% of full scale
<b>Thermal Drift:</b>	<25ppm/°C
<b>Operating Temperature:</b>	-10 to +50 °C
<b>Integral Battery:</b>	2x AA Alkaline (re-chargeable - optional)
<b>Battery Life:</b>	40 hours (with 350 ohm sensor)
<b>Keypad:</b>	Tactile with Rim Embossed Keys
<b>Environmental Protection:</b>	IP65
<b>Relative Humidity:</b>	95% non-condensing
<b>Weight:</b>	260 grammes approx.



All dimensions in mm

