

# TC4

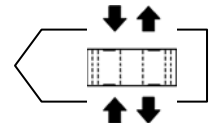
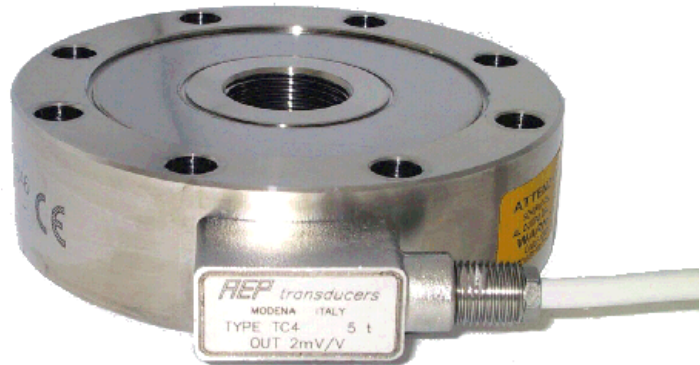
**STREKK/KOMPRESJON** **TENSION/COMPRESSION**

## Tilbehør Accessories

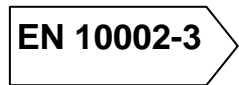


1*	2*	3*	4*
Lastfordelingshode	Sferisk lasthode	Bunnplate	Stanghoder

\*Se tabell på side 3.



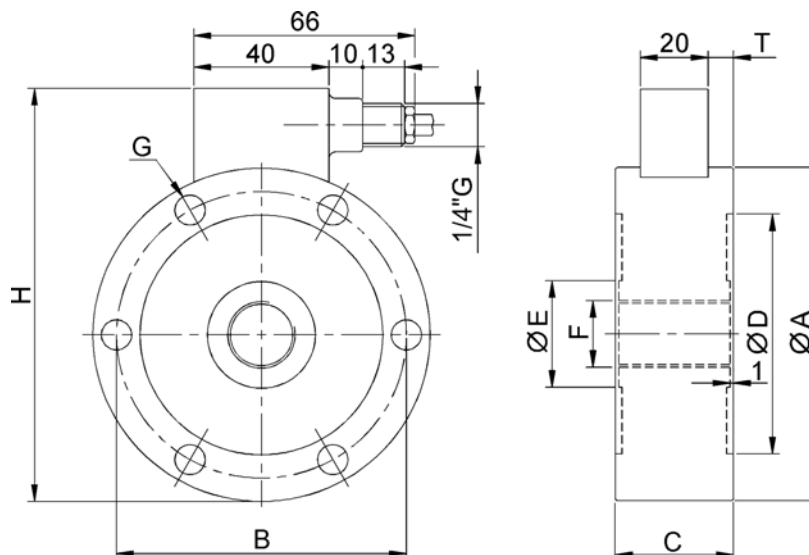
SIT sertifikat på anmodning  
SIT certificate on request



Referanse standarder:  
Reference standards:  
EN 10002-3, ISO 376, ASTM E74

## Dimensjoner Dimensions (mm)

CODE (Class 1)	LOAD	CODE (Class 1)	LOAD	ØA	B	C	ØD	ØE	F	G	n°G	H	T	KHz <sup>(1)</sup>
CTC4100500K5	0.5 t	CTC41005KNI15	5 kN	100	86	35	72	32	M20X1.5	9	6	121	7.5	2.3
CTC41001T5	1 t	CTC410010KNI15	10 kN											2.3
CTC41002T55	2.5t	CTC410025KNI15	25 kN											4.8
CTC41275T5	5 t	CTC412750KNI15	50 kN	127	110	35	92	47	M30X2	10.5	8	149	7.5	3.8
CTC412710T5	10 t	CTC4127100KNI15	100 kN											5.8
CTC416520T5	20 t	CTC4165200KNI15	200 kN	165	138	50	108	62	M42X3	17	12	188	15	5.7
CTC416530T5	30 t	CTC4165300KNI15	300 kN											7.3
CTC416550T5	50 t	CTC4165500KNI15	500 kN			9.8								
CTC423075T5	75 t	CTC4230750KNI15	750 kN	230	185	80	147	96	M60X3	25	12	254	30	18.2
CTC4230100T5	100 t	CTC42301MNI15	1000 kN											18.2



**Tekniske data**
**Technical data**

Nøyaktighetsklasse: ISO 376	Accuracy class: ISO 376	1			
Nøyaktighetsklasse: EN 10002-3	Accuracy class: EN 10002-3	1			
NOMINELL LAST	NOMINAL LOAD	5-10-25 kN (0,5-1-2,5 t)	50-100 kN (5-10 t)	200-300- 500 kN (20-30-50 t)	750-1000 kN (75-100 t)
RELATIV FEIL (av avlest verdi): a) Repeterbarhet 0°-120°-240° b) Interpolasjon c) Kraftretningvending d) Nullpunkt	RELATIVE ERROR (at reading): a) Repeatability 0°-120°-240° b) Interpolation c) Reversibility d) Zero	$\leq \pm 0.145\%^{(1)}$ $\leq \pm 0.090\%^{(1)}$ $\leq \pm 0.240\%^{(1)}$ $\leq \pm 0.030\%$ F.S.			
LINEARITET HYSTERESE	LINEARITY HYSTERESIS	$\leq \pm 0.05\%$ F.S.			
TEMPERATUR EFFEKT (10 °C): a) for nullpunkt b) for følsomhet EFFEKT AV TRANSVERSAL KRAFT: a) Ved 10% av nominell last	TEMPERATURE EFFECT (10 °C): a) on zero b) on sensitivity EFFECT OF TRANSVERSAL LOAD: a) At 10% of nominal load	$\leq \pm 0.028\%$ F.S. $\leq \pm 0.024\%$ F.S. $\leq \pm 0.030\%$ F.S.			
NOMINELL FØLSOMHET FØLSOMHETS TOLERANSE	NOMINAL SENSITIVITY SENSIVITY TOLERANCE	$2\text{mV/V}^{(2)}$ $\leq \pm 0.1\%$ F.S.			
INNGANGSMOTSTAND UTGANGSMOTSTAND ISOLASJONSMOTSTAND NULLBALANSE ANBEFALT SUPPLYS PENNING NOMINELL SUPPLYS PGS.OMRÅDE MAKS. SUPPLYS PENNING	INPUT RESISTANCE OUTPUT RESISTANCE INSULATION RESISTANCE ZERO BALANCE RECOMMENDED SUPPLY VOLTAGE NOMINAL SUPPLY VOLTAGE RANGE MAXIMUM SUPPLY VOLTAGE	$800 \pm 20 \Omega$ $352 \pm 2 \Omega$ $> 5 \text{ G}\Omega$ $\leq \pm 0.5\%$ F.S. 10 V 1-15 V 18 V			
MEKANISKE GRENSER REFERERT TIL NOMINELL LAST: a) bruksområde b) maks. tillatt last c) bruddlast d) maks. horisontal last e) maks. tillatt dynamisk last	MECHANICAL LIMIT values referred to nominal load: a) service load b) max permissible load c) breaking load d) max transverse load e) max permissible dynamic load	120% 150% >300% 100% 75%			
LENGDEENDR. VED NOMINELL LAST	DISPLACEMENT AT NOMINAL LOAD	- 0.06 mm	- 0.09 mm	- 0.17 mm	- 0.23mm
REFERANSETEMPERATUR NOMINELT TEMPERATUROMRÅDE BRUKSTEMPERATUR LAGRINGSTEMPERATUR	REFERENCE TEMPERATURE TEMPERATURE NOMINAL RANGE SERVICE TEMPERATURE RANGE STORAGE TEMPERATURE RANGE	+23°C -10/+40 °C -20/+70 °C -20/+80 °C			
VEKT	WEIGHT	1,60 kg	2,45 kg	5,80 kg	16,5 kg
TETNINGSGRAD (EN 60529) MATERIALE KABELLENGDE	PROTECTION CLASS (EN 60529) EXECUTION MATERIAL CABLE LENGTH	IP67 Rustfritt stål/ Stainless Steel 5m			
FESTEBOLTER: a) Diameter b) Kval.klasse c) Strammemoment	FIXING SCREWS: a) Diameter b) Resistance class c) Tightening torque	M8 12,9 40 Nm	M10 12,9 70 Nm	M16 12,9 368 Nm	M24 12,9 460 Nm

<sup>(1)</sup> Prosenttall refererer seg til avlest verdi ved min. 10% av nominell last / Percentual errors referred to reading, min. 10% of nominal load.

Kalibrering i kg (tonn) på anmodning / Calibration in kg on request.

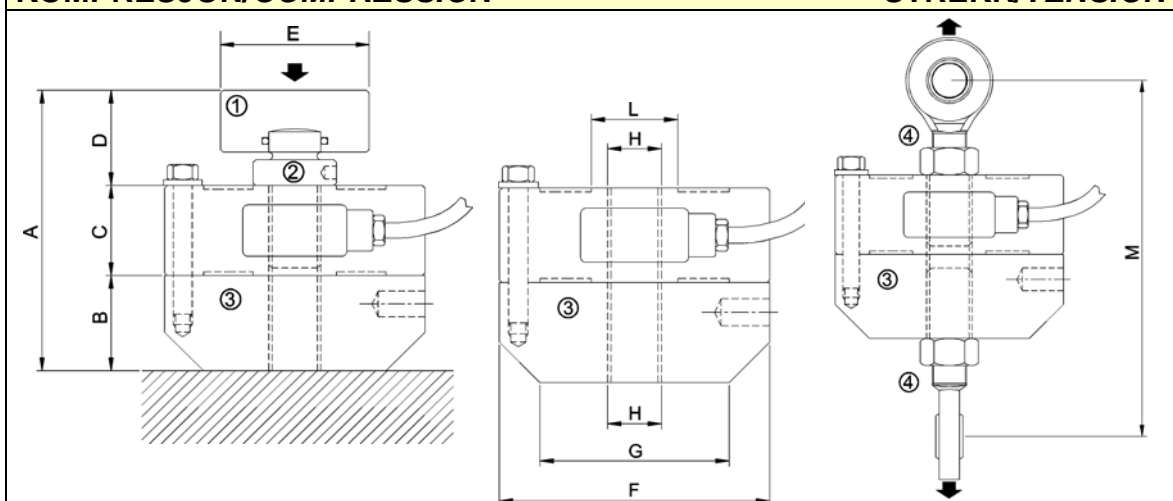
<sup>(2)</sup> Test og kalibrering utført ved kompresjon med veiecellen montert med kulelageropplagring og med korrekt stramming av skruer.

<sup>(2)</sup> Test and calibration performed in compression with the load cell mounted on a bearing support with correctly tightened clamping screws

**Elektrisk tilkøpling**
**Electrical connections**

Kabel type	Cable type	Veiecelle	Load Cell	TILKOPLING	WIRING	CABLE	KABEL
PVC 105 °C skjernet kabel, Ø 6 mm med 4 stk. fortinnete, Ø 0,35 mm <sup>2</sup> ledere				MATESPENNING+ MATESPENNING- UTSIGNAL+ UTSIGNAL-	EXCITATION+ EXCITATION - OUTPUT+ OUTPUT-	Red Black White Yellow Shield*	Rød Svart Hvit Gul Skjerm*
PVC 105°C shielded cable, Ø 6mm with 4 tinned Ø0.35mm <sup>2</sup> conductors.					-----		

\* Koplet til til veiecellekroppen. / Connected to the body of the load cell.

**ANVENDELSER**
**APPLICATIONS**
**KOMPRESJON/COMPRESSION**
**STREKK/TENSION**

**ADVARSEL:**

Kontroller at festbolter og annet tilleggsutstyr er korrekt tilstrammet.

**WARNING:**

Check that the fixing screws and the accessories are correctly tightened.



Festbolter:	Stål				Fixing Screws:	Steel			
Diameter	M8	M10	M16	M24	Diameter	M8	M10	M16	M24
Strammemoment (Nm)	40	70	368	460	Tightening torque (Nm)	40	70	368	460
Kvalitetsklasse	12.9				Resistance class	12.9			
Materiale i tilleggsutstyr: Fra 5 til 200 kN Fra 300 til 1000 kN	Rustfritt stål Rm $\geq 90$ kg/mm <sup>2</sup> Rm $\geq 130$ kg/mm <sup>2</sup>				Accessories execution material: from 5 to 200 kN from 300 to 1000 kN	Stainless Steel Rm $\geq 90$ kg/mm <sup>2</sup> Rm $\geq 130$ kg/mm <sup>2</sup>			

**DIMENSJONER**
**DIMENSIONS**

(mm)

TC4:	A	B	C	D	E	F	G	H	L	M
5, 10, 25 kN	109	37	35	37	∅ 57	∅ 100	∅ 70	M 20 X 1.5	∅ 32	~ 170
50, 100 kN	110	37	35	38	∅ 76	∅ 127	∅ 100	M 30 X 2	∅ 47	~ 200
200, 300, 500 kN	158	60	50	48	∅ 76	∅ 165	∅ 100	M 42 X 3	∅ 62	~ 224
750, 1000 kN	253	85	80	88	∅ 126	∅ 230	∅ 180	M 60 X 3	∅ 96	/

**Tilbehør**
**Accessories**

TC4:	CODE		ACCESSORIES (optional):	TILLEGGSUTSTYR (options):
5, 10, 25 kN	CTIC22	①	Loading head.	Lastfordelingshode ∅ 57 mm.
	CTC425M20	②	Spherical loading head M20X1.5.	Sfærisk lasthode M20X1.5
	CPBTC4D100	③	Mounting plate ∅ 100 mm.	Bunnplate ∅ 100 mm.
	CACCEM20	④	Rod end bolts.	Stanghoder M20X1,5
50, 100 kN	CTIC28	①	Loading head.	Lastfordelingshode ∅ 76 mm.
	CTC445M30	②	Spherical loading head M30X2.	Sfærisk lasthode M30X2.
	CPBTC4D127	③	Mounting plate ∅ 127 mm.	Bunnplate ∅ 127 mm.
	CACCEM30	④	Rod end bolts.	Stanghoder M30X2
200, 300, 500 kN	CTIC35	①	Loading head.	Lastfordelingshode ∅ 76 mm.
	CTS62M42	②	Spherical loading head M42X3.	Sfærisk lasthode M42X3.
	CPBTC4D165	③	Mounting plate ∅ 165 mm.	Bunnplate ∅ 165 mm.
	CACCEM42	④	Rod end bolts.	Stanghoder M42X3
750, 1000 kN	CTIC60	①	Loading head.	Lastfordelingshode ∅ 126 mm.
	CTS96M60	②	Spherical loading head M60X3.	Sfærisk lasthode M60X3
	CPBTC4D230	③	Mounting plate ∅ 230 mm.	Bunnplate ∅ 230 mm.